



**ENGINEERING SOLUTIONS
THROUGH INNOVATION**

Leaders in mining
**EQUIPMENT
DESIGN AND
MANUFACTURING**

www.wjengineering.co.za



**ENGINEERING SOLUTIONS
THROUGH INNOVATION**



VISION

WJ aims to be a leader in the South African and African mining industry by offering quality and innovative engineering solutions

MISSION

Ensuring that the way we conduct our business and interact with clients demonstrate our dedication and professionalism. This will be achieved through:

- ✓ our ongoing prioritising of relationships with clients by adding value to their enterprises;
- ✓ strategic investments in modern manufacturing technologies, design analysis and detailing software;
- ✓ a commitment to integrity, safety and quality; and
- ✓ investing in and valuing our dedicated and qualified personnel.

more than **50 years** of
industry experience



**ENGINEERING SOLUTIONS
THROUGH INNOVATION**



WJ is an engineering company that offers a comprehensive range of specialist products and services to the South African and African mining industry.

With its broad exposure to South Africa's rich mining industry, our company, established in 1964, has distinguished itself as a leader in designing, manufacturing and commissioning a variety of shaft conveyances, the Levelok® hydraulic conveyances clamp system, the Enerbuff energy absorbing buffer, and numerous types of steel structures.

WJ develops innovative designs and fabricating methods that are cost effective, time-saving, and provides practical, long-term quality solutions in partnership with their valued clients.

With a history spanning more than 50 years, the company, based in Potchefstroom, South Africa, is one of the oldest mining equipment manufacturing companies in South Africa.



PRODUCTS

WJ specialises in designing, draughting, detailing and manufacturing mining conveyances using normal structural steel, high-strength steel and aluminium, as well as consultation work.

Products designed, draughted and/or fabricated include:

- / skips
- / man and material cages
- / counterweights
- / loading/measuring flasks
- / vibrator chutes
- / equipment skeletons
- / crash steel simulations
- / skip tipping mechanisms
- / Levelok® clamp systems
- / Enerbuff energy absorbing buffers
- / ore pass chutes
- / any shaft related applications

WJ also specialises in detailing and manufacturing structural steelwork by utilising clients' designs and site commissioning.

Products manufactured include:

- / general structural steelwork
- / sinking equipment (sinking headgears; collar steelwork; shaft doors; sinking stages; kibbles; cactus grabs; shutter rings and dead man valves)
- / surface structures (winder houses; permanent headgears; conveyor systems; various tanks and pipes)
- / shaft steelwork (buntons; guides; station steelwork; rolling stock; monorails; shaft bottom steelwork; pipes; water and air; and steel shaft linings)



CAPABILITIES

- Ideally placed to deliver large-scale projects 25 000 m² floor and covered roof area with a maximum headroom of 14.5 metres, testing pit facility to hang conveyances vertically to test and simulate shaft operations.
- Manufacturing and production flow directly from:
 - Manufacturing and production flow directly from designs (based on relevant SANS or prescribed codes and subsequently checked using analysis software);
 - 3D models and complete shop detailing, into
 - material preparations done by state-of-the-art computerised CNC equipment (milling, lathes, wire cutting, plasma cutting and beam line machining).
- The quality management system is ISO 9001:2015 registered and is applicable to the design and manufacture of shaft conveyances, general engineering and fabricated products to the mining industry. This registration is only applicable to WJ Conveyances (Pty) Ltd.
- Sandblasting and painting is done in-house to ensure quality corrosion protection.
- Well-established site crew and the necessary equipment to assemble and commission fabricated products on site.
- In-house fleet of trucks and light delivery vehicles.
- Product support and after-sale service to solve complex client requirements.

GLOBAL PRESENCE

WJ is active in several countries around the world and has delivered products in African countries, such as DRC, Botswana, Ghana, Namibia, Tanzania and Zambia and countries on other continents including Mongolia, Canada and the Philippines.

CLIENTS

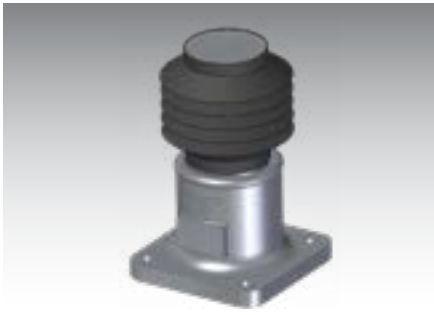
- ABB, Sweden
- Acacia Mining, Tanzania
- AngloGold Ashanti, South Africa and Ghana
- Anglo Platinum
- Assmang
- BCL, Botswana
- DRA | Evander Pan African Resources
- Goldfields
- Grinaker-LTA
- Harmony
- Hatch Africa
- Impala Platinum
- Kalagadi Manganese
- Kibali Gold Mine, DRC
- Konkola Copper Mine, Zambia
- Lonmin
- Philsaga Mining Corporation, Philippines
- Murray & Roberts
- NFC Africa (Zambian mine)
- Redpath
- RSV
- Shaft Sinkers
- Sibanye-Stillwater
- Siyanda Bakgatla Platinum
- Royal Bafokeng Resources
- TFM (Tenke Fungurume Mining)
- Vendanta Resources
- Worley





**ENGINEERING SOLUTIONS
THROUGH INNOVATION**

EXAMPLES OF PRODUCTS AND INSTALLATIONS





ENGINEERING SOLUTIONS
THROUGH INNOVATION

EXAMPLES OF PRODUCTS AND INSTALLATIONS





**ENGINEERING SOLUTIONS
THROUGH INNOVATION**

SOUTH AFRICA:

JACQUES CLAASSEN

(BTech Mechanical Engineering)

Director

Cell: +27 (0)82 829 8325

E-mail: jclaassen@wjengineering.co.za (RSA)

info@wjengineering.co.za

Tel: +27 (0)18 294 3395

Fax: +27 (0)18 294 5472

12 Grobler Street, Industria,

Potchefstroom, South Africa

PO Box 20985, Noordbrug, 2522, South Africa

INTERNATIONAL:

ZAMBIAN DISTRIBUTOR:



ABRAHAM NGOSA DAKA

Group CEO, Abrango Green Ltd

Cell: +27 719 73 6254

E-mail: abrangold@zambia.co.zm

Tel: +260 969 532600/

Tel: +260 955 758336

Block 3 Paragon Centre,

11th Street (next to MTN),

Kitwe, Zambia

ACCREDITATION



The quality management system is ISO 9001:2015 registered and is applicable to the design and manufacture of shaft conveyances, general engineering and fabricated products to the mining industry. This registration is only applicable to WJ Conveyances (Pty) Ltd.

AFFILIATIONS



the dti
Department
Trade and Industry
REPUBLIC OF SOUTH AFRICA



merSETA
ASSOCIATION OF MINING EDUCATION
AND TRAINING CENTRES IN SOUTH AFRICA